



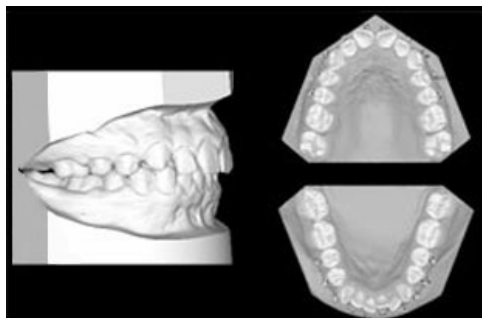
3D Computer Designed Braces, with Laser Scan, is a technology driven orthodontic treatment that combines powerful leading-edge technologies which may:

- Shorten overall treatment time
- Reduce the number of office adjustment appointments needed
- Provides maximum comfort

1. Precision Laser Scan

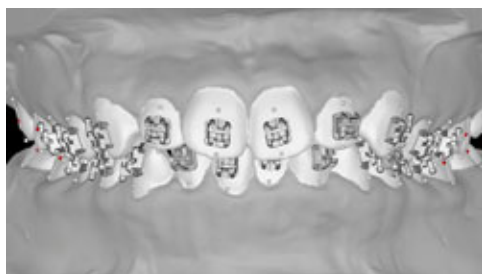
Digital Imaging with Laser Scan captures the exact position of every tooth in your mouth with pinpoint accuracy (within 20 microns).

2. 3D Digital Images



A realistic 3D model computer is then generated, using the laser scan computer data. This allows for the precise planning of every step of your treatment by virtually aligning your teeth directly on the computer screen using ideal doctor prescribed specifications.

3. Precision Placement of Braces



Digital placement allows for more accurate positioning of your braces in accordance with the desired final position of your teeth versus traditional manual placement methods. Braces are placed on the virtually identical computer model of your teeth with the highest level of accuracy and precision which is not possible using manual trial and error traditional braces placement methods.

4. Virtual Treatment Simulation

The precise final bracket position is determined by digitally attaching virtual orthodontic archwires to the virtual braces and then evaluation and adjusting the position until your ideal tooth alignment and beautiful smile are achieved.

5. Model Fabrication using 3D Printer

A Sophisticated 3D printer then creates a physical model and exact placement of your teeth from the digital model, which now includes your braces mounted with pinpoint accuracy.

6. Transfer Tray Fabrication on Model

Clear essix material is then molded and vacuum formed directly over the physical model, creating a lightweight and translucent tray that will be used to transfer the braces to your teeth.

7. Indirect Bonding to Patient



The braces are loaded in the tray, transferred to our teeth, and securely bonded with light activated adhesive. The transfer tray is then removed, leaving your braces accurately positioned on your teeth, which ensures optimal tooth alignment and your carefully planned ideal results.

8. Space Age Archwires



High-tech actual arch wires are physically attached to your new accurately positioned braces and then automatically activate when exposed to your own body heat. This makes computer design treatment more effective by allowing more comfortable, continuous, and efficient movement of your teeth, without the frequent adjustments, lengthy treatment time, and discomfort commonly associated with the manual trial and error placement of traditional braces.